



# KR LOGICS SUCCESS CANDIDATES OF



2023

2024



2025

2026



## SBI PO PRELIMS SET - 2

**Directions:** In the question given below, four sentences are given, which may or may not contain an error. Decide which of the sentences is grammatically correct or meaningful and mark the answer accordingly. If none of the sentences contain an error, mark 'All are correct' as your answer.

- 1)
- A) Netflix has seen success with South Korean productions, including the huge popular show Squid Game.
  - B) The executive said the money would be spent on making movies and television shows in the Asia's fourth largest economy.
  - C) We made this decision because we have great confidence that the creative industry will continues to tell great stories.
  - D) The company has cut prices in tens of countries around the world in an attempt to attract more customers.
  - E) All are correct

- 2)
- A) Warmer oceans can kill off marine life, leads to more extreme weather, and raise sea levels.
  - B) An important factor that is worrying scientists is the weather phenomenon known as the El Niño Southern Oscillation.
  - C) For the past three year, this naturally occurring event has been in a cooler phase and has helped keep global temperatures in check.
  - D) Several scientists contacted for the story were reluctance to go on record about the implications.
  - E) All are correct

- 3)
- A) As strange as this sounds, our holiday destination was heavily influenced by our desire to visit a certain bookstore.
  - B) In 2020, the government has liberalised the space sector and enabled large scale private sector participation in the country's space programme.
  - C) Recently, private hospitals have been urge by the government to directly procure the vaccines from the manufacturers.
  - D) Many fitness myths passed down through generations and now amplified by social media is often accepted as facts.
  - E) All are correct

- 4)
- A) Age-appropriate weightlifting as an strengthening exercise under expert supervision does not result in stunting.
  - B) There is an idea that weight-training will make women overly muscular.
  - C) Both doctors as well as fitness experts agree that walking is one of the best exercises.
  - D) Through the works of these poets, I started learning to notice little joys in the mundaneness of every days.
  - E) All are correct

- 5)
- A) In the virtual world of finance, every step is fraught with risk for ordinary folks.
  - B) Levitt set up a website where people described various dilemmas they were facing in their lives.
  - C) Cosy mysteries are definitely worth a shot, but be careful, as there are tonnes of bad books out there.
  - D) Too much milk could lead to digestive issues and leave you feeling bloated, uneasy, and nauseous.
  - E) All are correct

**Directions: In the following passage, some of the words have been left out and replaced by a blank represented by a letter. First read the passage and try to understand what it is about. Then fill in the blanks as per the questions given.**

Past studies have \_\_\_(1)\_\_\_ the importance of date labelling on consumers' decision making. Almost 60% of western European consumers surveyed said they "always" check date labels while purchasing a food item or preparing a meal. But the routine application of date labelling has long come under criticism. A recent study attributed consumers' failure to understand the application of date labelling to an increased likelihood of \_\_\_(2)\_\_\_ decision making. Indeed, research has shown that consumers commonly reject edible, but date-expired food, rejecting up to 56.7% of such food on average. The Institute of Food Technologists additionally question whether date labels are an accurate measure of food safety anyway, as post-packaging temperature control cannot be assured. The removal of date labelling is therefore a/ an \_\_\_(3)\_\_\_ start. Without date labels, often \_\_\_(4)\_\_\_ information that may \_\_\_(5)\_\_\_ with the consumers perception of what is edible, is removed. Instead, consumers are encouraged to sense-check fresh food items. Despite growing momentum in date label removal, industry stakeholders remain \_\_\_(6)\_\_\_ that retailers are duty-bound to do more.

6) Which of the following words fits the blank labelled as (1)?

- A) hoisted
- B) conferred
- C) overseen
- D) conformed
- E) confirmed

7) Which of the following words fits the blank labelled as (2)?

- A) plucky
- B) overt
- C) initial
- D) irrational
- E) jocular

8) Which of the following words fits the blank labelled as (3)?

- A) hilarious
- B) erratic
- C) promising

D) resolute

E) crafty

**9)** Which of the following words fits the blank labelled as (4)?

A) ubiquitous

B) dubious

C) reverent

D) benign

E) acerbic

**10)** Which of the following words fits the blank labelled as (5)?

A) interfere

B) postulate

C) humiliate

D) commend

E) fetter

**11)** Which of the following words fits the blank labelled as (6)?

A) pervasive

B) insistent

C) insincere

D) realistic

E) spiteful

**Directions:** In the question given below, some sentences/phrases are given which have to be arranged in a proper sequence. Select the option which best defines the proper sequence and arranges the sentence in an appropriate way.

**12)**

P. was not

Q. providing additional

R. resources to

S. deal with the problem

T. the police department

A) RPTQS

B) RTSQP

C) TSQRP

D) TPQRS

E) SQRPT

**13)**

P. I noticed that

Q. were wearing

R. many women and

S. worn-out footwear

T. small children

A) PSQRT

B) PRTQS

- C) TRQPS
- D) TPRSQ
- E) RPTQS

**14)**

- P. we ensure that
- Q. migrants follow norms
- R. our job is to maintain
- S. like social distancing
- T. law and order and

- A) SPQRT
- B) SQPTR
- C) QSRPT
- D) RPQTS
- E) RTPQS

**15)**

- P. we were
- Q. for his own good
- R. forced to admit
- S. him in a centre for
- T. dementia care

- A) PRSTQ
- B) PQSRT
- C) RSQTP
- D) RPTQS
- E) QRPST



**Directions:** In the question below, a sentence is given with two words missing. You are given five options containing a pair of words that can fill the blanks making the sentence contextually correct. Identify the correct choice.

**16)** Though the employee was proved \_\_\_\_\_ in the official enquiry, he did not regret his \_\_\_\_\_ behaviour.

- A) felonious, accountable
- B) rebellious, careful
- C) guilty, delinquent
- D) aberrant, fault
- E) witty, wrong

**17)** The manager \_\_\_\_\_ all the members of his team, affirming that they \_\_\_\_\_ to win the match.

- A) pessimist, earn
- B) rebuked, worthy
- C) persuaded, qualify
- D) cheered, brave
- E) encouraged, deserved

18) Despite a \_\_\_\_\_ fall in agricultural output, the overall economy this year experienced a healthy \_\_\_\_\_.

- A) trivial, terminal
- B) minor, growth
- C) insignificant, reduced
- D) remarkably, expansion
- E) negative, intensify

**Directions: Read the following passage carefully and answer the questions.**

The term 'acid rain' was coined in the mid-1800s, when Robert Angus Smith, a Scottish chemist working in London, noticed that rain tended to be more acidic in areas with more air pollution and that buildings crumble faster in areas where coal is burned. But it took another century for scientists to realize that acid rain was a widespread environmental problem.

Acid rain destroyed fish populations in lakes and streams, harmed fragile soils and damaged millions of acres of forest worldwide. These far-reaching effects illustrate the profound impact air pollution can have on the land. But the story of acid rain is also a tale of how understanding air pollution can lead to solutions. Due to overwhelming scientific evidence linking power plant emissions to acid rain and acid rain to the death of lakes, new regulations have dramatically cut emissions and cleaned up the rain that falls on the United States.

Acid rain occurs when sulfur dioxide and nitrogen oxide enter the atmosphere and react with water to form sulfuric and nitric acids. Natural sources of these gases exist—volcanoes, for instance, belch out sulfur dioxide—but the vast majority comes from the burning of fossil fuels, especially by coal-fired power plants. The tall smokestacks allow pollution to travel long distances. Acid rain affected many parts of the United States, but the Northeast suffered the most ecological damage. The Adirondack Mountains proved especially susceptible. Many soils contain calcium carbonate or other minerals that can neutralize acid rain before it seeps into lakes and streams. Unfortunately the Adirondacks have almost none. As a result, lakes and streams quickly became acidic, killing fish and other aquatic animals.

In the late 1970s, researchers surveyed 217 lakes above 2,000 feet in the Adirondacks and found that 51 percent were highly acidic. The news was so grim that scientists began attempting to breed more acid-tolerant strains of trout. One New York State employee compared the area to Death Valley. A decade later, a larger study that included 849 lakes higher than 1,000 feet found that 55 percent were either completely devoid of life or on the brink of collapse.

As the scientific evidence linking acid rain to power plant emissions and ecological damage **mounted**, battles erupted among industry, scientists and environmentalists. The 1980s is a period environmentalists call the 'acid rain wars,'. Environmentalists from Greenpeace climbed power plant smokestacks and hung banners in protest; scientists testified before Congress about the link between emissions and acid rain, the severity of the effects, and whether proposed legislation would have an impact; and the power industry questioned the science and argued that regulations would drive electricity rates sky high.

Congress passed several amendments to the Clean Air Act in 1990 that cut emissions of sulfur dioxide through a cap-and-trade scheme. The goal was a 50 percent reduction in sulfur dioxide emissions from 1980 levels. That goal was achieved in 2008, two years before the

deadline, which was set for 2010. Sulfur dioxide emissions fell from 17.3 million tons in 1980 to 7.6 million tons in 2008, less than the 8.95 million tons required by 2010.

The effect has been remarkable. The rain falling in the Northeast today is about half as acidic as it was in the early 1980s. Consequently, surface waters have become less acidic and **fragile** ecosystems are beginning to recover. In many places, however, recovery has been painfully slow. Scientists now know that acid rain not only acidified lakes and streams, it also leached calcium from forest soils. That calcium depletion has had devastating effects on trees, especially sugar maples and red spruce. Acid rain leaches calcium from the needles of red spruce, making them more susceptible to cold. It also leaches calcium and magnesium from the soil, which can stress sugar maples. In addition, acid rain allows aluminum to accumulate in the soil. When trees take up aluminum, their roots can become brittle. Although some effects of acid rain are lingering, most scientists consider it an environmental success story.

**19)** As per the passage, which of the following is NOT an effect of acid rain?

- A) It causes groundwater to become polluted.
- B) It reduces soil quality.
- C) It causes die-offs of fish species in lakes and streams.
- D) It makes buildings more likely to collapse.
- E) It destroys vast areas of forests.

**20)** Why were the Adirondack Mountains more susceptible to acid rain than other areas in the US?

- A) These mountains are surrounded by large numbers of factories that release sulphur dioxide into the air, that causes acid rain.
- B) These mountains are home to endangered species that are particularly vulnerable to acid rain.
- C) These mountains are not under the jurisdiction of the laws that cut down emissions in vulnerable areas that cause acid rain.
- D) These mountains do not have soils containing calcium carbonate or other minerals that neutralize acid rain.
- E) None of the above

**21)** Which of the following was a method employed to respond to the finding that lakes and streams in the Adirondacks mountains were highly acidic?

- A) Conservation of endangered species living in these lakes and streams
- B) Breeding of acid-resistant trout in these lakes and streams
- C) Cleaning drives targeting these lakes and streams
- D) Assisted migration of fish species living in these lakes and streams
- E) Shutting down of factories near these lakes and streams

**22)** Which of the following events of 1980s contributed to the decade's being named the 'acid rain wars'?

1. Scientists testified before Congress about the link between emissions and acid rain

2. Greenpeace environmentalists hung banners on power plant smokestacks in protest  
3. The power industry questioned the science linking emissions to acid rain
- A) Only 3  
B) Only 1 and 2  
C) Only 1 and 3  
D) Only 2 and 3  
E) All 1, 2 and 3

**23)** Which of the following assertions can be made about the Clean Air Act of 1990?

- A) It achieved its target just in time before its deadline.  
B) It achieved its target before the deadline set for it.  
C) It was successful in the short term, but failed in the long term.  
D) It was successful, but only many years after its deadline.  
E) It did not achieve its target and failed entirely.

**24)** In which of the following ways does acid rain harm maple and spruce trees?

- A) It leaches calcium and magnesium from the soil, which impacts sugar maples.  
B) It leaches calcium from the needles of red spruce, which makes them vulnerable to cold.  
C) It allows aluminum to collect in the soil, which makes the roots of trees brittle.  
D) Both (a) and (b)  
E) All (a), (b) and (c)

**25)** Which of the following is closest in meaning to the word '**mounted**' as used in the passage?

- A) increased  
B) prepared  
C) obtained  
D) reduced  
E) indulged

**26)** Which of the following is opposite in meaning to the word '**fragile**' as used in the passage?

- A) direct  
B) interesting  
C) strong  
D) insincere  
E) abundant

**In each of the s given below a sentence is given with three words in bold. Choose the option which gives the correct sequence of these words to make the sentence grammatically and contextually correct.**

**27)** Anthony **(A) healed** sick people into thinking that he had powers that **(B) exposed** them but was soon **(C) tricked** by the authorities.

- A) CAB  
B) CBA  
C) BAC  
D) ACB

E) None of these

**28) (A) rescued** by the American Tortoise Rescue, the first World Turtle Day was **(B) started** on May 23, 2000, one week after many of them were **(C) observed**.

A) ACB

B) BCA

C) BAC

D) CBA

E) None of these

**29) Jobs (A) evolving** pension plans are harder to come by **(B) compared** to previous decades as a result of **(C) offering** workplace norms.

A) BAC

B) CAB

C) CBA

D) BCA

E) None of these

**30) A group searching for (A) notorious** treasure has discovered a **(B) lost** of coins that belonged to a **(C) collection** con artist.

A) BAC

B) ACB

C) CAB

D) CBA

E) None of these

**Directions: In the below, a sentence is given with a part highlighted in bold. From the options, choose the phrase that can replace it in order to make the sentence grammatically and meaningfully correct.**

**31) Humans have an annoying habit of becoming habituate to** positive changes in our life.

A) of getting used to

B) of get accustomed to

C) of becoming habitat to

D) of becoming accustomed of

E) No Improvement

**32) Guiliana was hiking through a temperate rainforest in search of an elusive fox when she was stumbled upon** the mushroom that would change her life.

A) she chanced up on

B) she happened to find

C) she accidental discovered

D) she find out

E) No Improvement

**33)** It is no surprise that Stradivarius instruments **are seek after** for their historical value, not to mention their visual beauty.

- A) are in demand
- B) are popularity
- C) has become famous
- D) hold greatly value
- E) No Improvement

**Directions:** In the following question, match the sentences beginning in Column 1 with their appropriate endings in Column 2.

**34)**

Column 1	Column 2
A. Poor sleep is increasingly common in children	D. are changing their strategies.
B. Although painfully slow, there are signs that fossil fuel companies	E. and associations between short sleep duration in early childhood and obesity are consistently found.
C. If there is one thing that the internet has made it easy for consumers to access without the help of advertising,	F. it is information about products.

- A) A and D
- B) A and F
- C) B and D
- D) B and E
- E) C and D

**35)**

Column 1	Column 2
A. Bangladesh not only kept girls in school but improved their lives on multiple levels	D. of whether to welcome students back to campus, or continue teaching remotely for the rest of the year.
B. The creation of ingenious machines made possible the mass production of high-quality cotton and woolen thread and yarn,	E. with a simple, low-cost stipend program.
C. Universities have been grappling with the decision	F. which helped transform Great Britain into the world's leading manufacturer of textiles in the second half of the 18th century.

- A) A and D
- B) A and F
- C) B and E
- D) C and D
- E) C and F

**Directions: A set of six statements is given, out of which the last statement is fixed, and the rest are jumbled in any random order. Rearrange the remaining statements in the right order and answer the questions.**

**A.** The town was named after Pallava king Narasimhavarman-I, also known as Mamalla who founded the town's religious centre in the 7th century.

**B.** Mahabalipuram was already a thriving seaport on the Bay of Bengal before the reign of Pallava dynasty particularly Narasimhavarman-I, where it became an important centre of art, architecture and literature.

**C.** According to reports, city under the king Narsimhavarman-I had a trade and defence relationship with China, in which the king agreed to help China in keeping a check on the growth of Tibet as a powerful nation, during those years.

**D.** Mamallapuram, also called Mahabalipuram or Seven Pagodas is a historic town situated in Tamil Nadu state, lies along the Coromandel Coast of the Bay of Bengal.

**E.** Apart from arts and architecture, Narasimhavarman-I, was also good when it came to trading and having partnerships with other countries, especially with the neighbours.

**F.** Various studies by archaeologists and historians also show that Mamallapuram had commercial links with countries like China, Sri Lanka, and other South-East Asian countries.

**36)** Which of the following will be the FIRST statement after rearrangement?

- A) A
- B) B
- C) C
- D) D
- E) E

**37)** Which of the following will be the SECOND statement after rearrangement?

- A) A
- B) B
- C) C
- D) D
- E) E

**38)** Which of the following will be the THIRD statement after rearrangement?

- A) A
- B) B
- C) C
- D) D
- E) E

**39)** Which of the following will be the FOURTH statement after rearrangement?

- A) A
- B) B
- C) C
- D) D
- E) E

**40)** Which of the following will be the FIFTH statement after rearrangement?

- A) A
- B) B
- C) C
- D) D
- E) E

**41)** Amit calculates his profit percentage on the cost price whereas Raman calculates his profit on the selling price. The selling price for both of them is same, and Amit gets 20% profit and Raman also gets 20% profit. If they find that the difference of their profits is Rs.160, find the selling price.

- A) Rs. 4800
- B) Rs. 4200
- C) Rs. 4000
- D) Rs. 4500
- E) Rs. 5400

**42)** Ram and Rahim together started a business with investment in the ratio of 4:3, respectively. If the ratio of time period of investment by Ram and Rahim is 3:4, respectively, then the profit share of Ram is what percentage of the profit share of Rahim.

- A) 75%
- B) 100%
- C) 50%
- D) 200%
- E) Cannot be determined

**43)** Pipes A and B alone can fill the tank in 15 minutes and 20 minutes, respectively while pipe C alone can empty half of the tank in 15 minutes. If all the pipes are opened together, then find the time taken to fill the tank completely.

- A) 10 minutes
- B) 15 minutes
- C) 14 minutes
- D) 12 minutes
- E) 9 minutes

**44)** A mixture of milk and water contains 80 litres of milk and 'x' litres of water. If 20% of the mixture is taken out, and 16 litres of water is added to the remaining mixture such that quantity of milk and water becomes equal in the final mixture. Find the value of 'x'.

- A) 50
- B) 60
- C) 40
- D) 55
- E) 48

**45)** A certain sum amounts to Rs. 7500 and Rs. 8400 after 5 years and after 8 years at some rate of simple interest, respectively. Find the rate of simple interest per annum.

- A) 10%
- B) 8%
- C) 5%
- D) 12.5%
- E) 7.5%

**Directions: Answer the questions based on the information given below.**

The following table shows the marks obtained by 4 students i.e. Goku, Vegeta, Jiren and Gohan in 3 different subjects i.e. Physics, Chemistry and Mathematics. Some of the values are missing in the table. You need to calculate those data if required.

Student	Marks obtained in Physics (Out of 100)	Marks obtained in Chemistry (Out of 100)	Marks obtained in Mathematics (Out of 100)	Overall percentage marks obtained in given three subjects
Goku	98	95	-	95%
Vegeta	84	-	94	92%
Jiren	-	90	85	85%
Gohan	90	100	80	-

**46)** If Goku had scored 5 marks less in Physics, 8 marks less in Chemistry and 4 marks more in Mathematics than what he actually scored, then find the ratio of the total marks Goku would have scored to the total marks Vegeta has scored.

- A) 8:9
- B) 11:10
- C) 1:1
- D) 22:21
- E) 5:4

**47)** What is the sum of marks scored in Mathematics by given four students?

- A) 351
- B) 350
- C) 349
- D) 353
- E) None of these.

**48)** If marks scored by another student Napa in Physics is 10 more than that by Jiren and Vegeta scored 8 marks more in Chemistry than that by Napa then find the average of marks obtained by Napa in Physics and Chemistry together.

- A) 88
- B) 92
- C) 90

- D) 85
- E) 86

**49)** Marks scored by Vegeta in Chemistry is approximately how much percent of the total marks scored by Gohan in all 3 subjects together?

- A) 51.6%
- B) 20.4%
- C) 36.3%
- D) 28.8%
- E) 44.2%

**50)** If marks scored (out of 150) by Goku in English is 8 less than the marks scored by him in Mathematics, then find out the percentage marks scored by him in English.

- A) 56%
- B) 54%
- C) 62%
- D) 55%
- E) 60%

**Directions:** Answer the questions based on the information given below.

Asim, Amit and Amal spend 20%, 25% and 15% of their monthly salaries respectively on food and rent together. Each of them spends  $\frac{1}{4}$ th of the remaining amount on entertainment and saves rest of the amount which was left after spending on given three items. Monthly salary of Asim is Rs. 2000 more than that of Amal. Ratio between the monthly salaries of Amit and Amal is 2:1 respectively. Asim saves Rs. 3000 per month.

**51)** Salary of another person Pankaj is equal to the sum of the salaries of given three persons together. Pankaj spends Rs. 5600 per month and saves the rest. Find the savings per month of Pankaj.

- A) Rs. 10400
- B) Rs. 9300
- C) Rs. 7800
- D) Rs. 9100
- E) Rs. 8400

**52)** What is the average amount spent by Amit and Asim on entertainment?

- A) Rs. 925.50
- B) Rs. 1062.50
- C) Rs. 1050.50
- D) Rs. 950
- E) None of these

**53)** What is the ratio of the amount spent on food and rent together by Amit and Amal together to that by Asim alone?

- A) 39:20
- B) 21:10

- C) 41:20
- D) 37:10
- E) 11:6

**54)** If another person Rana spends 20% more amount than Amal on food and rent together, then find the amount spent by Rana on food and rent together.

- A) Rs. 640
- B) Rs. 580
- C) Rs. 540
- D) Rs. 620
- E) None of these.

**55)** The curved surface area of a cylindrical vessel is 2496 cm<sup>2</sup>. The respective ratio of the radius and the height of the vessel is 13:8. If the cylindrical vessel is full of water, then find the time taken to empty the vessel at the rate of 338 cm<sup>3</sup> of water per second. [Take  $\pi = 3$ ]

- A) 92 seconds
- B) 96 seconds
- C) 108 seconds
- D) 84 seconds
- E) 120 seconds

**56)** Tywin and Robert together started a business with a total investment of Rs. 4800. After a year, Tywin decreased his investment by 20% while Robert increased his investment by 40%. At the end of 2 years, Tywin and Robert divided the profit in the ratio 21:20, respectively. Find the initial investment of Tywin.

- A) Rs. 3000
- B) Rs. 3200
- C) Rs. 3600
- D) Rs. 2400
- E) Rs. 2800

**57)** Armaan earns Rs. 80000 in a month. He spends 17% and 22% of his income in house rent and food, respectively. If 75% of rest amount was spent by him in others and the remaining amount is saved by him then find the amount saved by Armaan in a month.

- A) Rs. 12200
- B) Rs. 13800
- C) Rs. 12800
- D) Rs. 11400
- E) Rs. 13600

**58)** Sunil deposited Rs. 40000 at 15% p.a. compound interest, compounded annually for 2 years in bank A. After 2 years, he deposited all amount got by him from bank A in bank B at 20% p.a. simple interest for another 3 years. Find the simple interest earned by him.

- A) Rs. 30126
- B) Rs. 34520
- C) Rs. 32536

- D) Rs. 31740
- E) Rs. 28456

**59)** An article was sold at 32% profit. If the same article were sold at 28% loss then the shopkeeper would have earned Rs. 216 less. What was the marked price of the article if the shopkeeper marked the article 55% above the cost price?

- A) Rs. 582
- B) Rs. 578
- C) Rs. 602
- D) Rs. 558
- E) Rs. 632

**60)** Rastogi, Chanchad, and Qureshi alone can do a work in 16 days, 20 days, and 28 days respectively. All of three started working together but after 3 days of the start Rastogi left the work, and 4 days before the completion of the work Chanchad left the work. For how many days did only Chanchad and Qureshi work together?

- A) 81/19 days
- B) 72/13 days
- C) 77/16 days
- D) 100/21 days
- E) 52/9 days

**61)** A container contains mixture of substance A and substance B in the ratio 5:13, respectively. 90 litres of mixtures is replaced with 42 litres of substance A. If the ratio of substance A to substance B in the final mixture becomes 3:5, then find the amount of substance B mixed initially.

- A) 299 litres
- B) 390 litres
- C) 230 litres
- D) 260 litres
- E) 325 litres

**62)** The sum of the incomes of 'A', 'B' and 'C' is Rs. 31000. 'A', 'B' and 'C' spends 60%, 80% and 75% of their respective incomes such that ratio of their savings is 2:5:8, respectively. Find the difference between the incomes of 'A' and 'C'.

- A) Rs. 16000
- B) Rs. 10500
- C) Rs. 12800
- D) Rs. 14000
- E) Rs. 13500

**63)** What approximate value will come in place of the question mark (?) in the following question? (Note: You are not expected to calculate the exact value.)

$$\sqrt{(\sqrt{4096.01} + 34.99 \times 12.01) + (35.01 \times 19.99) \div 25} = ?$$

- A) 2
- B) 50

- C) 94
- D) 140
- E) 192

64)  $25.01\%$  of  $499.99 - 11.99\%$  of  $675.01 = 19.99\%$  of ?

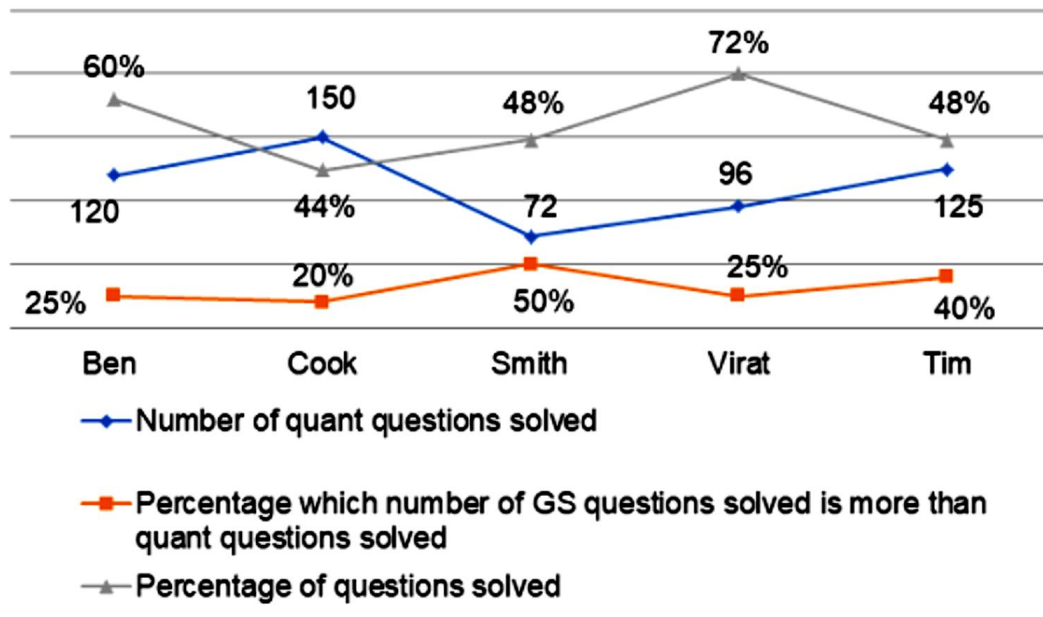
- A) 55
- B) 110
- C) 220
- D) 330
- E) 440

65)  $54.97\%$  of  $800 + 32.89 \times 4 - 396.12 \div 17.91 = ?$

- A) 712
- B) 656
- C) 484
- D) 550
- E) 401

**Directions: Answer the questions based on the information given below.**

The given line graph shows the number quant questions solved, percentage by which number of GS questions solved is more than that of quant questions solved and percentage of total questions solved by five students out of total questions (quant + GS) asked to them.



66) Tim solved only 50% of quant questions. If the number of GS questions asked to Punit is 40% less than that to Tim, then find the number of GS questions asked to Punit.

- A) 225
- B) 275
- C) 300
- D) 320
- E) 240

**67)** The number of GS questions solved by Smith is how much percent more/less than number of quant questions solved by Ben and Cook, together?

- A) 45%
- B) 60%
- C) 80%
- D) 32%
- E) 75%

**68)** Out of total questions that were not solved by Virat,  $\frac{1}{6}$ th were of GS. Find the difference between total number of quant questions asked to Virat and total questions asked to Cook.

- A) 526
- B) 612
- C) 468
- D) 584
- E) 640

**69)** The number of GS questions which is not solved by Cook is 40% of total questions asked. Find the ratio of total quant questions asked to Cook and number of GS questions solved by Ben, respectively.

- A) 9:5
- B) 3:2
- C) 7:4
- D) 5:3
- E) 2:1

**70)** Find the average number of questions asked to Smith and Tim.

- A) 560
- B) 480
- C) 500
- D) 640
- E) 420

**Directions (71-75): Answer the questions based on the information given below.**

Eight persons Anita, Binita, Cinita, Dinita, Enita, Finita, Ginita and Hinita live on different floors of an 8-storey building. Each of them has different number of shops among 5, 7, 8, 12, 15, 20, 23 and 25. The bottommost floor is numbered as 1 while, the topmost as 8.

At least one person lives between persons, who have 5 and 12 shops. Dinita has odd number of shops which are fewer than that of Finita. Ginita lives just below Finita's floor. Cinita, who has 20 shops, lives two floors above Anita, who has prime number of shops. Dinita lives two floors above the one, who has 7 shops. Binita, who has 8 shops, lives on 3rd floor. Hinita lives on topmost floor. Binita does not live adjacent to Cinita's floor. Ginita has 10 more shops than that of Finita.

**71)** Who among the following has 23 shops?

- A) Enita
- B) Binita

- C) Ginita
- D) Anita
- E) Finita

**72)** How many persons live above Enita's floor?

- A) Five
- B) Three
- C) Four
- D) Two
- E) One

**73)** What is the difference in number of shops of Ginita and Binita?

- A) 14
- B) 17
- C) 18
- D) 20
- E) 10

**74)** Who lives just above Cinita's floor?

- A) Dinita
- B) Anita
- C) Binita
- D) Hinita
- E) Ginita

**75)** How many persons live below the one, who has 5 shops?

- A) Five
- B) Four
- C) Three
- D) Six
- E) Eight

**Directions (76-80):** Answer the questions based on the information given below.

Eight persons Priya, Babu, Rahul, Suri, Sachin, Faizal, Vineet and Hema were born on 8th of eight different months viz. January, March, April, June, July, August, September and December in the same year but not necessarily in the same order.

Priya was born in July. Only two persons were born between Priya and Hema. Suri was born immediately before Faizal. Suri was not born in September. Babu was born in the month which has even number of days. Number of persons born before Hema is one less than the number of persons born after Vineet.

**76)** Who among the following was born in September?

- A) Vineet
- B) Rahul
- C) Faizal
- D) Babu



E) None of the above

**77)** Who among the following was born immediately before Priya?

- A) Sachin
- B) Faizal
- C) Suri
- D) Can't be determined
- E) Rahul

**78)** Who among the following was born in January?

- A) Rahul
- B) Vineet
- C) Suri
- D) Sachin
- E) Can't be determined

**79)** Who was born in April?

- A) Suri
- B) Rahul
- C) Babu
- D) Sachin
- E) Faizal

**80)** If Sachin was born after Vineet then number of persons born between Suri and Rahul is same as number of persons born between \_\_\_ and \_\_\_.

- I. Faizal and Vineet
  - II. Hema and Faizal
  - III. Sachin and Faizal
- A) Only I
  - B) Only II
  - C) Only II and III
  - D) Only I and II
  - E) None of the above

**Directions (81-83): Answer the questions based on the information given below.**

There are eight members in a family of three generations having two married couples. V and W are siblings. T is brother-in-law of U. T is the only son of P. U has only two children. Q is married to P. P has no siblings. S is aunt of T. U has no siblings and is married to R. V is the only son of R.

**Common solution:**

T is the brother-in-law of U, who has no siblings which means U is married to R, who is mother of V as T is the only son of P. Now, S is the aunt of T and P has no siblings which means S is the sister of Q.

**81)** If Q is female member, then how is P related to U?

- A) Father
- B) Brother-in-law

- C) Father-in-law
- D) Uncle
- E) None of the above

**82)** If P is the father of R, then how is Q related to the sister of V?

- A) Mother
- B) Mother-in-law
- C) Uncle
- D) Can't be determined
- E) Grandmother

**83)** How is T related to V?

- A) Paternal Uncle
- B) Maternal Aunt
- C) Brother
- D) Maternal Uncle
- E) Paternal Aunt

**Directions (84-88):** Read the following information and answer the questions below.

Nine boxes K1, K2, K3, K4, B1, B2, B3, B4 and B5 are placed in an almirah having nine shelves, where the bottommost shelf is 1 and the shelf above it is 2 and so on. Each shelf contains only one box.

Box B3 is placed below the box K4. The number of boxes placed between box K2 and B3 is same as the number of boxes placed between K2 and K4. Only two boxes are there in between the box K4 and B4. Box K4 is placed in odd numbered shelf but below the shelf 7. Only three boxes are placed between the box B2 and K3. Box B5 is placed either on the topmost or bottommost shelf. Box B5 is placed immediately above the box K3 and box K1 is placed immediately below the box B1.

**84)** Which of the following boxes is placed on shelf number 4?

- A) B2
- B) K1
- C) K2
- D) K3
- E) None of the above

**85)** Which of the following boxes is placed just above the box K1?

- A) K3
- B) B1
- C) B2
- D) B4
- E) None of the above

**86)** How many boxes are placed in between the box K2 and B1?

- A) Three
- B) Two

- C) Four
- D) Five
- E) None of the above

**87)** Which box is placed in the shelf 2?

- A) B5
- B) K1
- C) K3
- D) B4
- E) None of the above

**88)** How many boxes are placed above the box B1?

- A) Two
- B) Three
- C) One
- D) Five
- E) None of the above

**Directions (89-93):** Answer the questions based on the information given below.

Eight persons namely, Mic, Nac, Opi, Piu, Que, Raj, Shi and Tim, sit around a circular table such that some of them face towards the centre, while others face away from the centre of the table. No two persons with names starting with consecutive alphabet sit adjacent to each other.

Mic sits third to the left of Raj, who faces away from the centre. Que sits second to the right of Mic. Que and Piu face opposite direction to each other. Piu sits third to the right of Opi. Nac and Shi sit immediate right to each other. Only one person sits between Shi and Opi (either from left or right). Piu sits immediate right of Tim. Que sits neither third to the left of Tim nor second to the right of Piu.

**89)** Which of the following statements are definitely true?

- I. Opi and Raj face same direction.
  - II. Shi sits third to the right of Que.
  - III. Both the immediate neighbours of Opi face opposite direction to each other.
- A) Only statement I
  - B) Only statements I and II
  - C) Only statement II
  - D) Only statements II and III
  - E) All three statements

**90)** Who among the following doesn't sit adjacent to the one, who faces away from the centre?

- A) Piu
- B) Opi
- C) Que
- D) Mic
- E) Nac

91) How many persons sit between Que and Raj, when counted from the left of Que?

- A) Three
- B) Five
- C) Four
- D) No one
- E) Two

92) \_\_\_\_\_ sits third to the left of \_\_\_\_\_.

- A) Raj, Tim
- B) Nac, Que
- C) Opi, Piu
- D) Shi, Que
- E) Tim, Mic

93) \_\_\_\_\_ and \_\_\_\_\_ face same direction.

- A) Opi, Shi
- B) Tim, Que
- C) Shi, Raj
- D) Mic, Piu
- E) Both 'c' and 'd'

94) Using the 2<sup>nd</sup>, 3<sup>rd</sup>, 7<sup>th</sup>, 8<sup>th</sup> and 9<sup>th</sup> letters of the word 'KNOWLEDGE', how many meaningful words can be formed? If there is only one word formed, then what will be its the second letter from the right. If there is more than one word can be formed, then mark 'Y' as your answer and if there are no word is formed, then mark 'Z' as your answer.

- A) O
- B) D
- C) G
- D) Z
- E) Y

95) How many pairs of alphabets are there in the word 'EXPLANATION' which has as many letters between them in the word as in the alphabetical series?

- A) Three
- B) Four
- C) One
- D) Two
- E) None

**Directions (96-100): Answer the questions based on the information given below.**

Eight persons A, B, C, D, P, Q, R and S work in different departments viz. HR, Finance and Marketing. Not more than three persons work in a single department and at least two persons work in same department. Also, each of them like different brands of watches i.e., MI, Apple, Rado, Titan, Fastrack, Samsung, Sonata and Maxima but not in the same order.

C likes Sonata and works in Marketing department. B works in same department with only one, who likes MI. Neither D nor P works in same department as B. Q likes Fastrack. Both A and S work in same department. One of the persons from Marketing department, likes Rado. Neither A nor D works in Marketing department. One of the persons, who work in Finance department, likes Samsung. The one, who works in same department as R, does not like Samsung. Neither S nor D likes Samsung. B neither likes Titan nor Maxima. S does not like Titan.

**96)** B works in \_\_\_\_\_ Department.

- A) Finance
- B) Either Finance or Marketing
- C) HR
- D) Marketing
- E) None of the above

**97)** Who works in the same department as P?

- A) Only A
- B) A and B
- C) R and A
- D) Only Q
- E) C and Q

**98)** Who likes MI brand?

- A) Q
- B) R
- C) P
- D) S
- E) None of the above

**99)** Who likes Titan brand?

- A) The one, who works in Finance
- B) A
- C) The one, who works in Marketing
- D) S
- E) The one, who works in HR

**100)** Who among the following work(s) in Finance?

- A) Only A and S
- B) Only B and Q
- C) A, B, and P
- D) A, D and S
- E) Only D and A



## Answer & Explanation

### 1: d)

The sentence in D is correct. Thus, D is the right answer.

In A, the adjective HUGE should be replaced with the adverb HUGELY because the word is being used to modify the adjective POPULAR.

In B, the definite article THE before ASIA should be removed, as we do not use THE with the names of countries and continents.

In C, the third person singular verb CONTINUES should be replaced with its base form CONTINUE, as the modal verb WILL always takes a verb in its base form after it.

### 2: b)

The sentence in B is correct. Thus, B is the right answer.

In A, the third person singular verb LEADS should be replaced with its base form LEAD so that it is of the same form as the verbs KILL OFF and RAISE. Verbs joined with AND are similar in form.

In C, the singular noun YEAR should be replaced with its plural form YEARS, as it is determined by the number THREE.

In D, the noun RELUCTANCE should be replaced with the adjective RELUCTANT, as we need an adjective to come after the linking verb WERE and form the subject-complement of the noun SCIENTISTS.

### 3: a)

The sentence in A is correct. Thus, A is the right answer.

In B, the auxiliary verb HAS before LIBERALISED should be omitted because the sentence is in the simple past tense, as evident by the point of time in the past, IN 2020.

In C, the base form of the verb URGE should be replaced with its past participle form URGED because the passive voice structure HAVE + BEEN + VERB takes the past participle form of the verb.

In D, the singular verb IS should be replaced with the plural verb ARE, as the subject is MYTHS is plural.

### 4: b)

The sentence in B is correct. Thus, B is the right answer.

In A, the indefinite article AN should be replaced with A because the adjective STRENGTHENING is a word with a consonant sound. When an adjective precedes a noun, the article is used according to the adjective.

In C, AS WELL AS should be replaced with AND, as BOTH is paired with AND and not AS WELL AS.

In D, the plural noun DAYS should be replaced with its singular form DAY, as the determiner EACH modifies singular nouns.

### 5: e)

All the sentences are grammatically and meaningfully correct. Thus, E is the right answer.

### 6: e)

We need a past participle form verb to fit in the HAVE + VERB present perfect tense construction. CONFIRMED (validated) will fit here as the sentence tells us how past studies have authenticated the importance of date labelling on consumers' decision making. Thus, E is the right answer.

Hoisted - lifted. Conferred - granted a title or honour to someone. Overseen - supervised. Conformed - adapted to norms or standards.

**7: d)**

We need an adjective to modify the gerund phrase DECISION MAKING. IRRATIONAL (unreasonable) will fit here as the sentence tells us how consumers might make illogical decisions if they do not understand the application of date labelling on food products. Thus, D is the right answer.

Plucky - brave. Overt - done or shown openly. Initial - beginning; first. Jocular - humorous or playful.

**8: c)**

We need an adjective to modify the noun START. PROMISING (having potential to be effective) will fit here as the sentence tells us how the removal of date labelling from food products might be a possibly effective start to solving the problem of food wastage. Thus, C is the right answer.

Hilarious - funny; amusing. Erratic - unpredictable. Resolute - determined. Crafty - sly; cunning.

**9: b)**

We need an adjective to modify the noun INFORMATION. DUBIOUS (ambiguous; unclear) will fit here as the sentence tells us how unclear information will not be given to consumers if date labels are removed from food products. Thus, B is the right answer.

Ubiquitous - present or found everywhere. Reverent - respectful. Benign - harmless. Acerbic - bitter.

**10: a)**

We need a base form verb to follow the modal verb MAY. INTERFERE (meddle) will fit here as the sentence tells us how date labels provide inaccurate information that might meddle with the consumers' perception of what is edible. Thus, A is the right answer.

Postulate - suggest. Humiliate - insult. Commend - praise. Fetter - restrict.

**11: b)**

We need an adjective to modify the noun STAKEHOLDERS. INSISTENT (adamant) will fit here as the sentence tells us how industry stakeholders are adamant that date labels should not be removed from food products and rather, retailers should take responsibility. Thus, B is the right answer.

Pervasive - spreading through an area. Insincere - not genuine; dishonest. Realistic - practical. Spiteful - malicious.

**12: d)**

TPQRS is the final order. T begins the sentence by establishing the subject - the police department. PQ proceeds as a pair with the verb stem - was not providing. RS concludes by telling us what the police department was not providing - additional resources to deal with the problem. Thus, D is the right answer.

**13: b)**

PRTQS is the final order. P begins the sentence by establishing the subject - I. RT begins the follows as a pair by telling us what the speaker noticed - many women and small children. QS concludes by telling us that they were wearing worn-out footwear. Thus, B is the right answer.

**14: e)**

RTPQS is the final order. R begins the sentence by establishing the subject - OUR JOB. T follows by telling us what their job is - to maintain law and order. PQ proceeds by telling us how they ensure that migrants follow norms. S concludes by telling us an example of such a norm - social distancing. Thus, E is the right answer.

**15: a)**

PRSTQ is the final order. P begins the sentence by establishing the subject - WE. RS follows as a pair by telling us how they were forced to admit him in a centre. TQ concludes as a pair by telling us why - for dementia care for his own good. Thus, A is the right answer.

**16: c)**

(c) is the right answer. Guilty – blameworthy, delinquent – criminal. We need an adjective in the first blank to modify the noun EMPLOYEE and an adjective in the second blank to modify the noun BEHAVIOUR. The sentence talks about how the charges against the employee were proved right but he did not express remorse for his actions.

A is incorrect since the word PROVED, in the context of the sentence, must only be followed by the word GUILTY or INNOCENT, and the word ACCOUNTABLE is not an adjective that can be used to describe the noun BEHAVIOUR.

B is incorrect because the word PROVED, in the context of the sentence, can only be followed by the word GUILTY or INNOCENT, and the word CAREFUL is unsuitable in the context of the sentence.

D is incorrect because the word PROVED, in the context of the sentence, can only be followed by the word GUILTY or INNOCENT, and the word FAULT is a noun whereas an adjective is required in the context.

E is incorrect because the word WITTY is unsuitable in the context of the sentence.

**17: e)**

(e) is the right answer. Encouraged – motivated, deserved – earned. We need a verb in the first blank to link the subject MANAGER with the object MEMBERS OF HIS TEAM, and a verb in the second blank to link the subject THEY with the object MATCH. The sentence talks about how the manager gave support to all the members of his team and told them that they were worthy of the victory in the match.

A is incorrect because the word PESSIMIST is a noun whereas a verb is required in the context of the sentence, and the word EARN does not make sense in the context.

B is incorrect because the word REBUKED means scolded, which is opposite in meaning to what is implied by the sentence. The word WORTHY is an adjective which must be preceded

by the verb WERE or a noun which must be followed by the preposition OF, whereas a verb in the past tense is required in the context of the sentence.

C is incorrect because the word QUALIFY is a verb in the present tense, whereas a verb in the past tense is required in the context of the sentence.

D is incorrect because the word BRAVE is a noun whereas a verb is required in the context of the sentence.

**18: b)**

(b) is the correct answer. Minor – insignificant, growth – the process of increasing. We need a noun in the first blank to be modified by the indefinite article A and a noun in the second blank to be modified by the adjective HEALTHY. The sentence talks about how in spite of a fall in agricultural output, the overall economy of this year showed a healthy growth.

A is incorrect because the word TERMINAL means extreme, which is not suitable in the context of the sentence.

C is incorrect because the word INSIGNIFICANT must be preceded by the article AN, whereas the sentence has the article A, and the word REDUCED means diminished which does not make sense in the context of the sentence.

D is incorrect because REMARKABLY is an adverb, whereas an adjective is required in the context of the sentence.

E is incorrect because the word NEGATIVE does not make sense in the context of the sentence, since a FALL cannot be NEGATIVE, and the word INTENSIFY is a verb whereas a noun is required in the context.

**19: a)**

All except A are mentioned in the passage as effects of acid rain. Refer to the lines: *“The term ‘acid rain’ was coined in the mid-1800s, when Robert Angus Smith, a Scottish chemist working in London, noticed that rain tended to be more acidic in areas with more air pollution and that buildings crumble faster in areas where coal is burned. But it took another century for scientists to realize that acid rain was a widespread environmental problem.”* These lines confirm D.

Refer to the lines: *“Acid rain destroyed fish populations in lakes and streams, harmed fragile soils and damaged millions of acres of forest worldwide. These far-reaching effects illustrate the profound impact air pollution can have on the land.”* These lines confirm B, C and E.

Thus, (a) is the right answer.

**20: d)**

Refer to the lines: *“Acid rain affected many parts of the United States, but the Northeast suffered the most ecological damage. The Adirondack Mountains proved especially susceptible. Many soils contain calcium carbonate or other minerals that can neutralize acid rain before it seeps into lakes and streams. Unfortunately the Adirondacks have almost none.”* Thus, (d) is the right answer.

The other options are not mentioned in the passage.

**21: b)**

Refer to the lines: *“As a result, lakes and streams quickly became acidic, killing fish and other aquatic animals. In the late 1970s, researchers surveyed 217 lakes above 2,000 feet in the*

Adirondacks and found that 51 percent were highly acidic. The news was so grim that scientists began attempting to breed more acid-tolerant strains of trout.” Thus, (b) is the right answer.

The other options are not mentioned in the passage as methods employed to cope with the acid rain impacting these lakes and streams.

**22: e)**

All 1, 2 and 3 are mentioned in the passage as events that took place during the 1980s and gave it the name ‘acid rain wars’. Refer to the lines: “The 1980s is a period environmentalists call the ‘acid rain wars.’ Environmentalists from Greenpeace climbed power plant smokestacks and hung banners in protest; scientists testified before Congress about the link between emissions and acid rain, the severity of the effects, and whether proposed legislation would have an impact; and the power industry questioned the science and argued that regulations would drive electricity rates sky high.” Thus, (e) is the right answer.

**23: b)**

Refer to the lines: “Congress passed several amendments to the Clean Air Act in 1990 that cut emissions of sulfur dioxide through a cap-and-trade scheme. The goal was a 50 percent reduction in sulfur dioxide emissions from 1980 levels. That goal was achieved in 2008, two years before the deadline, which was set for 2010. Sulfur dioxide emissions fell from 17.3 million tons in 1980 to 7.6 million tons in 2008, less than the 8.95 million tons required by 2010.” These lines confirm that the act achieved its target two years before its deadline, which will make (b) the right answer.

A is incorrect because the act achieved its goal before time, not right on time. C and D cannot be claimed from the information given in the passage. E is contradicted by the passage.

**24: e)**

Both A and B are mentioned in the passage as ways in which acid rain harms these two trees specifically. C is mentioned as a way in which acid rain harms trees in general, which would also apply to these two types of trees. Refer to the lines: “Scientists now know that acid rain not only acidified lakes and streams, it also leached calcium from forest soils. That calcium depletion has had devastating effects on trees, especially sugar maples and red spruce. Acid rain leaches calcium from the needles of red spruce, making them more susceptible to cold. It also leaches calcium and magnesium from the soil, which can stress sugar maples. In addition, acid rain allows aluminum to accumulate in the soil. When trees take up aluminum, their roots can become brittle.” Thus, (e) is the right answer.

**25: a)**

MOUNTED means rose or increased. Thus, (a) is the right answer.

Prepared - got something ready for a particular purpose. Obtained - got. Reduced - decreased. Indulged - fulfilled.

**26: c)**

FRAGILE means delicate or vulnerable. STRONG is its antonym. Thus, (c) is the right answer. Direct - straightforward. Interesting - arousing interest, curiosity or enthusiasm. Insincere - dishonest. Abundant - plentiful.

**27: a)**

The sentence tells us how Anthony tricked (fooled) sick people into thinking that he had powers that healed (cured) them but was soon exposed (presented to be dishonest or illegal) by the authorities. CAB is the correct order of words in the sentence. Thus, A is the right answer.

**28: b)**

The sentence tells us how after getting started (introduced) by the American Tortoise Rescue, the first World Turtle Day was observed (celebrated) on May 23, 2000, one week after many of them were rescued (saved from danger) . BCA is the correct order of words in the sentence. Thus, B is the right answer.

**29: c)**

The sentence tells us how jobs offering (providing) pension plans are harder to come by now as compared (contrasted with the pension plans) of previous decades as a result of evolving (gradually developing) workplace norms. CBA is the correct order of words in the sentence. Thus, C is the right answer.

**30: e)**

The sentence tells us how a Polish group that was searching for lost (missing) treasure has discovered a collection (group) of coins that belonged to a notorious (infamous) con artist. BCA is the correct order of words in the sentence, which is not given in the options. Thus, E is the right answer.

**31: a)**

OF GETTING USED TO will fit here as the sentence talks about how humans become accustomed to positive changes in life. Thus, (a) is the right answer.

(b) is incorrect. The base form verb GET needs to be replaced with the present participle form verb GETTING to fit the OF+VERB construction. (c) is incorrect. HABITAT, which means the natural home of an animal, is contextually inappropriate. (d) is incorrect. ACCUSTOMED will be followed by the preposition TO instead of OF. The highlighted phrase is incorrect. The base form verb HABITUATE needs to be Replaced with the past participle form verb HABITUATED to form the object of the verb BECOMING.

**32: b)**

SHE HAPPENED TO FIND will fit here as the sentence talks about how Guiliana inadvertently found a mushroom on her hike. Thus, (b) is the right answer.

(a) is incorrect. The prepositions UP and ON need to be replaced with UPON to form the phrase CHANCED UPON. (c) is incorrect. The adjective ACCIDENTAL needs to be replaced with the adverb ACCIDENTALLY to modify the verb DISCOVERED. (d) is incorrect. The plural verb FIND will be replaced with the singular FINDS to agree with the singular subject SHE. The highlighted phrase is incorrect as it renders no meaning to the sentence.

**33: a)**

ARE IN DEMAND will fit here as the sentence talks about how Stradivarius instruments are popular for their historical value, not to mention their visual beauty. Thus, (a) is the right answer.

(b) is incorrect. The noun POPULARITY needs to be replaced with the adjective popular to modify the noun INSTRUMENTS. (c) is incorrect. The singular verb HAS needs to be replaced with the plural HAVE to agree with the plural subject INSTRUMENTS. (d) is incorrect. The adverb GREATLY needs to be replaced with the adjective GREAT to modify the noun VALUE. The highlighted phrase is incorrect. The base form verb SEEK needs to be replaced with its past participle form SOUGHT to fit the passive voice construction ARE+VERB.

**34: c)**

(c) is the right answer. The correct pairs are AE, BD and CF.

AE - A tells us that poor sleep is increasingly common in children. E supplies additional information on the same subject by telling us that associations between short sleep duration in early childhood and obesity are consistently found.

BD - B begins the sentence by talking about signs one can see among fossil fuel companies. D tells us that the sentence is talking about signs of changing their strategies

CF - C begins the sentence talking about a certain thing that the internet has made it easy for consumers to access. F tells us that it is information about products.

**35: d)**

(d) is the right answer. The correct pairs are AE, BF and CD.

AE - A begins the sentence by talking about how Bangladesh has kept girls in school as well as improved their lives on multiple levels. E tells us how it has managed to do so - with a simple, low-cost stipend program.

BF - B talks about how the creation of ingenious machines made possible the mass production of high-quality cotton and woolen thread and yarn. F tells us how it helped transform Great Britain into the world's leading manufacturer of textiles in the second half of the 18th century.

CD - C tells us that universities are struggling to make a certain decision. D tells us that the said decision is about whether to welcome students back to campus, or continue teaching remotely for the rest of the year.

**36: d)**

(d) is the correct answer. The correct sequence is D-A-B-E-C-F. D begins the sentence by introducing the subject-HISTORY OF MAMALLAPURAM. A follows D as it further elucidates on how the city got its name. B follows A as it talks about how the city was developed into a centre of art, architecture and literature by Pallava king Narsimhavarman-I. E and C form pair as they talk about trade relations of the city with neighbouring countries. F conclude it by establishing that the city also has commercial relations with other countries.

**37: a)**

(a) is the correct answer. The correct sequence is D-A-B-E-C-F. D begins the sentence by introducing the subject-HISTORY OF MAMALLAPURAM. A follows D as it further elucidates on how the city got its name. B follows A as it talks about how the city was developed into a centre of art, architecture and literature by Pallava king Narsimhavarman-I. E and C form pair

as they talk about trade relations of the city with neighbouring countries. F conclude it by establishing that the city also has commercial relations with other countries.

**38: b)**

(b) is the correct answer. The correct sequence is D-A-B-E-C-F. D begins the sentence by introducing the subject-HISTORY OF MAMALLAPURAM. A follows D as it further elucidates on how the city got its name. B follows A as it talks about how the city was developed into a centre of art, architecture and literature by Pallava king Narsimhavarman-I. E and C form pair as they talk about trade relations of the city with neighbouring countries. F conclude it by establishing that the city also has commercial relations with other countries.

**39: e)**

(e) is the correct answer. The correct sequence is D-A-B-E-C-F. D begins the sentence by introducing the subject-HISTORY OF MAMALLAPURAM. A follows D as it further elucidates on how the city got its name. B follows A as it talks about how the city was developed into a centre of art, architecture and literature by Pallava king Narsimhavarman-I. E and C form pair as they talk about trade relations of the city with neighbouring countries. F conclude it by establishing that the city also has commercial relations with other countries.

**40: c)**

(c) is the correct answer. The correct sequence is D-A-B-E-C-F. D begins the sentence by introducing the subject-HISTORY OF MAMALLAPURAM. A follows D as it further elucidates on how the city got its name. B follows A as it talks about how the city was developed into a centre of art, architecture and literature by Pallava king Narsimhavarman-I. E and C form pair as they talk about trade relations of the city with neighbouring countries. F conclude it by establishing that the city also has commercial relations with other countries.

**41: a)**

Let the selling price = Rs. x

According to the question,

$$x \times 20/100 - x/120 \times 100 \times 20/100 = 160$$

$$x/5 - x/6 = 160$$

$$(6x - 5x)/30 = 160$$

$$x = 4800$$

Selling price = Rs. 4800

Hence, option a.

**42: b)**

Let the investment of Ram and Rahim be Rs. 4x and Rs. 3x, respectively.

Also, let the time period of investment by Ram and Rahim be 3y and 4y years, respectively.

So, ratio of profit share of Ram and Rahim = 12xy: 12xy = 1:1

Required percentage =  $1/1 \times 100 = 100\%$

Hence, option b.

**43: d)**

Time taken by pipe C to empty the full tank =  $15 \times 2 = 30$  minutes

Let the total capacity of tank = 60 litres (LCM of 15, 20 and 30)  
 Quantity of water filled by pipe A in one minute =  $60/15 = 4$  litres  
 Quantity of water filled by pipe B in one minute =  $60/20 = 3$  litres  
 Quantity of water emptied by pipe C in one minute =  $60/30 = 2$  litres  
 Required time taken =  $60/(4 + 3 - 2) = 12$  minutes  
 Hence, option d.

**44: b)**

According to question,

$$0.8 \times 80 = 0.8x + 16$$

$$64 = 0.8x + 16$$

$$0.8x = 48$$

$$x = 60 \text{ litres}$$

Hence, option b.

**45: c)**

$$\text{S.I. earned in 3 years} = 8400 - 7500 = \text{Rs. } 900$$

$$\text{S.I. earned in 1 year} = 900/3 = \text{Rs. } 300$$

$$\text{So, principal amount} = 7500 - 300 \times 3 = \text{Rs. } 6000$$

$$\text{Required rate of interest} = 300/6000 \times 100 = 5\% \text{ p.a.}$$

Hence, option c.

**46: c)**

In case of Goku,

$$\text{Total marks obtained} = 0.95 \times 300 = 285$$

$$\text{Marks obtained in Mathematics} = 285 - 98 - 95 = 92$$

In case of Vegeta,

$$\text{Total marks obtained} = 0.92 \times 300 = 276$$

$$\text{Marks obtained in Chemistry} = 276 - 94 - 84 = 98$$

In case of Jiren,

$$\text{Total marks obtained} = 0.85 \times 300 = 255$$

$$\text{Marks obtained in Physics} = 255 - 90 - 85 = 80$$

In case of Gohan,

$$\text{Total marks obtained} = 90 + 100 + 80 = 270$$

$$\text{Overall percentage} = (270/300) \times 100 = 90\%$$

Hence, we can tabulate

Student	Marks obtained in Physics (Out of 100)	Marks obtained in Chemistry (Out of 100)	Marks obtained in Mathematics (Out of 100)	Overall percentage marks obtained in given three subjects	Total marks obtained
Goku	98	95	92	95%	285
Vegeta	84	98	94	92%	276
Jiren	80	90	85	85%	255
Gohan	90	100	80	90%	270

Goku's total marks according to the given condition =  $98 - 5 + 95 - 8 + 92 + 4 = 276$

Required ratio =  $276:276 = 1:1$

Hence, option c.

**47: a)**

Total marks scored =  $92 + 94 + 85 + 80 = 351$

Hence, option a.

**48: c)**

Required average =  $\{(80 + 10) + (98 - 8)\}/2 = \{(90 + 90)/2\} = 90$

Hence, option c.

**49: c)**

Required percentage =  $(98/270) \times 100 \sim 36.3\%$

Hence, option c.

**50: a)**

Required percentage =  $\{(92 - 8)/150\} \times 100 = 56\%$

Hence, option a.

**51: e)**

Let, monthly salary of Asim = Rs.  $100x$

Amount spent by him on food and rent together =  $0.2 \times 100x = \text{Rs. } 20x$

Amount spent by him on entertainment =  $(100x - 20x) \times (1/4) = \text{Rs. } 20x$

His savings =  $100x - 20x - 20x = \text{Rs. } 60x$

Now,

$60x = 3000$

Or,  $x = 50$

Or,  $100x = 5000$

Monthly salary of Amal =  $5000 - 2000 = \text{Rs. } 3000$

Monthly salary of Amit =  $3000 \times (2/1) = \text{Rs. } 6000$

**For Amal:**

Amount spent by Amal on food and rent together =  $0.15 \times 3000 = \text{Rs. } 450$

Amount spent by him on entertainment =  $(3000 - 450) \times (1/4) = \text{Rs. } 637.50$

His savings =  $3000 - 450 - 637.50 = \text{Rs. } 1912.50$

**For Amit:**

Amount spent by Amit on food and rent together =  $0.25 \times 6000 = \text{Rs. } 1500$

Amount spent by him on entertainment =  $(6000 - 1500) \times (1/4) = \text{Rs. } 1125$

His savings =  $6000 - 1500 - 1125 = \text{Rs. } 3375$

Person	Total salary (in Rs.) per month	Amount (in Rs.) spent on food and rent together	Amount (in Rs.) spent on entertainment	Savings (in Rs.)
Asim	5000	$20 \times 50 = 1000$	$20 \times 50 = 1000$	$5000 - 2000 = 3000$
Amit	6000	1500	1125	3375

Amal	3000	450	637.50	1912.50
------	------	-----	--------	---------

Savings per month of Pankaj =  $14000 - 5600 = \text{Rs. } 8400$

Hence, option e.

**52: b)**

Required average =  $\{(1000 + 1125)/2\} = \text{Rs. } 1062.50$

Hence, option b.

**53: a)**

Required ratio =  $(1500 + 450):1000 = 39:20$

Hence, option a.

**54: c)**

Required amount =  $1.2 \times 450 = \text{Rs. } 540$

Hence, option c.

**55: b)**

Let, the radius and the height of the cylindrical vessel be  $13x$  cm and  $8x$  cm, respectively.

So,  $2 \times 3 \times 13x \times 8x = 2496$

$624x^2 = 2496$

$x^2 = 2496/624$

$x^2 = 4$

$x = 2$

Therefore, radius of the cylindrical vessel =  $13x = 13 \times 2 = 26$  cm

And, height of the cylindrical vessel =  $8x = 8 \times 2 = 16$  cm

Volume of the cylindrical vessel =  $3 \times 26 \times 26 \times 16 = 32448 \text{ cm}^3$

Required time =  $32448/338 = 96$  seconds

Hence, option b.

**56: e)**

Let, amount invested by Tywin initially = Rs. 'x'

Then, amount invested by Robert initially = Rs.  $(4800 - x)$

Respective profit ratio of Tywin and Robert =  $(x + 0.8x):\{(4800 - x) + 1.4 \times (4800 - x)\} =$

$1.8x:11520 - 2.4x'$

So,  $1.8x/(11520 - 2.4x) = 21/20$

$36x = 11520 \times 21 - 50.4x$

$86.4x = 11520 \times 21$

$x = 2800$

Hence, option e.

**57: a)**

Total amount spent by Armaan in house rent and food =  $39\%$  of  $80000 = \text{Rs. } 31200$

Remaining amount =  $80000 - 31200 = \text{Rs. } 48800$

Amount saved by Armaan =  $25\%$  of  $48800 = \text{Rs. } 12200$

Hence, option a.

**58: d)**

Total amount got by Sunil from bank A =  $40000 \times (1.15)^2 = 40000 \times 1.3225 = \text{Rs. } 52900$

Simple interest earned by him =  $(52900 \times 20 \times 3)/100 = \text{Rs. } 31740$

Hence, option d.

**59: d)**

Let, cost price of the article = Rs. x

So,  $1.32x - 0.72x = 216$

$0.6x = 216$

$x = 360$

Marked price of the article = 155% of 360 = Rs. 558

Hence, option d.

**60: c)**

Total work = LCM of 16, 20, and 28 = 560 units

Units of the work done by Rastogi in a day =  $560/16 = 35$  units

Units of the work done by Chanchad in a day =  $560/20 = 28$  units

Units of the work done by Qureshi in a day =  $560/28 = 20$  units

Total work done in first 3 days =  $(35 + 28 + 20) \times 3 = 249$  units

Total work done in last 4 days =  $20 \times 4 = 80$  units

Remaining work =  $560 - (249 + 80) = 231$  units

Time taken by Chanchad and Qureshi to do 231 units of work =  $231/48 = 77/16$  days

Hence, option c.

**61: d)**

Let, amount of substance A and substance B in the container be '5a' and '13a' respectively.

So,  $(5a - 25 + 42)/(13a - 65) = 3/5$

$(5a + 17)/(13a - 65) = 3/5$

$25a + 85 = 39a - 195$

$14a = 280$

$a = 20$

So, amount of substance B mixed initially =  $13a = 260$  litres

Hence, option d.

**62: e)**

Let the incomes of 'A', 'B' and 'C' be Rs. x, Rs. y and Rs. z

Therefore, savings of 'A' = Rs.  $0.4x$

Savings of 'B' = Rs.  $0.2y$

Savings of 'C' = Rs.  $0.25z$

According to the question,

$0.4x:0.2y:0.25z = 2:5:8$

Or,  $x:y:z = (2/0.4):(5/0.2):(8/0.25) = 5:25:32$

Therefore, income of 'A' =  $31000 \times (5/62) = \text{Rs. } 2500$

Income of 'C' =  $31000 \times (32/62) = \text{Rs. } 16000$

Required difference =  $16000 - 2500 = \text{Rs. } 13500$

Hence, option e.

**63: b)**

$$\sqrt{\sqrt{4096.01} + 34.99} \times 12.01 + (35.01 \times 19.99) \div 25 = ?$$

$$\sqrt{\sqrt{4096} + 35} \times 12 + (35 \times 20) \div 25 \sim ?$$

$$? \sim \sqrt{64 + 420} + 700 \div 25 \sim ?$$

$$? \sim \sqrt{484} + 28 \sim ?$$

$$? \sim 22 + 28 \sim ?$$

$$? \sim 50$$

Hence, option b.

**64: c)**

$$25.01\% \text{ of } 499.99 - 11.99\% \text{ of } 675.01 = 19.99\% \text{ of } ?$$

$$0.20 \times ? \sim 0.25 \times 500 - 0.12 \times 675$$

$$0.20 \times ? \sim 125 - 81$$

$$0.20 \times ? \sim 44$$

$$? \sim 220$$

Hence, option c.

**65: d)**

$$54.97\% \text{ of } 800 + 32.89 \times 4 - 396.12 \div 17.91 = ?$$

$$55\% \text{ of } 800 + 33 \times 4 - 396 \div 18 \sim ?$$

$$440 + 132 - 22 \sim ?$$

$$550 \sim ?$$

Hence, option d.

**66: a)**

For Ben:

$$\text{Number of quant questions solved} = 120$$

$$\text{Number of GS questions solved} = 1.25 \times 120 = 150$$

$$\text{Total questions asked} = (150 + 120)/0.6 = 450$$

Similarly,

People	Number of quant questions solved	Number of GS questions solved	Total questions solved
Ben	120	150	450
Cook	150	180	750
Smith	72	108	375
Virat	96	120	300
Tim	125	175	625

$$\text{Number of quant questions asked to Tim} = 125/.50 = 250$$

$$\text{Therefore, number of GS questions asked to Tim} = 625 - 250 = 375$$

$$\text{Total GS questions asked to Punit} = 0.6 \times 375 = 225$$

Hence, option a.

**67: b)**

Number of quant questions solved by Ben and Cook, together =  $120 + 150 = 270$   
 Required percentage =  $\{(270 - 108)/270\} \times 100 = 60\%$   
 Hence, option b.

**68: d)**

Number of questions that were not solved by Virat =  $300 - (120 + 96) = 84$   
 Number of quant questions that were not solved by Virat =  $(5/6) \times 84 = 70$   
 Total quant questions asked to Virat =  $96 + 70 = 166$   
 Required difference =  $750 - 166 = 584$   
 Hence, option d.

**69: a)**

Number of questions which is not solved by Cook =  $750 - (180 + 150) = 420$   
 Number of GS questions which is not solved by Cook =  $0.4 \times 750 = 300$   
 Number of quant questions which is not solved by Cook =  $420 - 300 = 120$   
 Total quant questions asked to Cook =  $(120 + 150) = 270$   
 Required ratio =  $270:150 = 9:5$   
 Hence, option a.

**70: c)**

Required average =  $(375 + 625)/2 = 500$   
 Hence, option c.

**Answers: 71 – 75**

**Starting point:** Here, we can start by fixing Dinita in order to form three cases.

**Clues:** Dinita lives two floors above the one, who has 7 shops. Binita, who has 8 shops, lives on 3rd floor. Hinita lives on topmost floor.

**Inference:** So, Dinita lives on any floor among 4th, 6th and 7th floor.

Floors	Case 1		Case 2		Case 3	
8 <sup>th</sup>	Hinita		Hinita		Hinita	
7 <sup>th</sup>					Dinita	
6 <sup>th</sup>			Dinita			
5 <sup>th</sup>						7
4 <sup>th</sup>	Dinita			7		
3 <sup>rd</sup>	Binita	8	Binita	8	Binita	8
2 <sup>nd</sup>		7				
1 <sup>st</sup>						

**Clues:** Cinita, who has 20 shops, lives two floors above Anita, who has prime number of shops. Binita does not live adjacent to Cinita's floor. Ginita has 10 more shops than that of Finita. Ginita lives just below Finita's floor. Dinita has odd number of shops lesser than that of Finita.

**Inference:** So, Hinita, Dinita, Finita and Ginita must have 12, 5, 15 and 25 shops respectively.

Floors	Case 1		Case 2		Case 3	
8 <sup>th</sup>	Hinita		Hinita	12	Hinita	12
7 <sup>th</sup>	Cinita	20	Cinita	20	Dinita	5
6 <sup>th</sup>	Enita		Dinita	5	Cinita	20
5 <sup>th</sup>	Anita	23	Anita	23	Enita	7
4 <sup>th</sup>	Dinita		Enita	7	Anita	23
3 <sup>rd</sup>	Binita	8	Binita	8	Binita	8
2 <sup>nd</sup>	Finita	7	Finita	15	Finita	15
1 <sup>st</sup>	Ginita		Ginita	25	Ginita	25

**Clues:** At least one person lives between persons who have 5 and 12 shops.

Floors	Person	Number of shops
8 <sup>th</sup>	Hinita	12
7 <sup>th</sup>	Cinita	20
6 <sup>th</sup>	Dinita	5
5 <sup>th</sup>	Anita	23
4 <sup>th</sup>	Enita	7
3 <sup>rd</sup>	Binita	8
2 <sup>nd</sup>	Finita	15
1 <sup>st</sup>	Ginita	25

71)

Anita has 23 shops.  
Hence, option d.

72)

Four persons live above Enita's floor.  
Hence, option c.

73)

The difference in number of shops of Ginita and Binita =  $25 - 8 = 17$   
Hence, option b.

74)

Hinita lives just above Cinita's floor.  
Hence, option d.

75)

There are five shops below the one, who has 5 shops.  
Hence, option a.

76-80

**Common solution:**

**Starting Point:** Start with the direct information we have i.e., Priya was born in July.

**Clues:** Only two persons were born between Priya and Hema.

**Inference:** Now, Hema either born in March or December

Months	Case-I	Case-II
January		
March	Hema	
April		
June		
July	Priya	Priya
August		
September		
December		Hema

**Clues:**

1. Number of persons born before Hema is one less than the number of persons born after Vineet.
2. Suri was born immediately before Faizal.
3. Suri was not born in September.

**Inference:** Now, regarding clue 1, case II is rejected. So, in case I, Vineet must be born in August and Suri must be born in April.

Months	Persons
January	
March	Hema
April	Suri
June	Faizal
July	Priya
August	Vineet
September	
December	

**Clues:** Babu was born in the month which has even number of days.

**Inference:** So, Babu must be born in September and either Rahul or Sachin was born in December or January.

So, the final arrangement is as follows:

Months	Persons
January	Rahul / Sachin
March	Hema
April	Suri
June	Faizal
July	Priya
August	Vineet
September	Babu
December	Sachin / Rahul

76)

Babu was born in September.  
Hence, option d.

77)

Faizal was born immediately before Priya.

Hence, option b.

78)

Either Rahul or Sachin was born in January.

Hence, option e.

79)

Suri was born in April.

Hence, option a.

80)

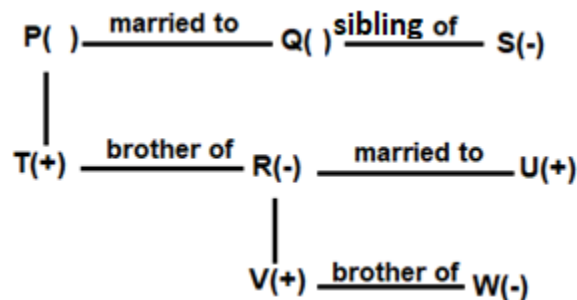
If Sachin was born after Vineet then there is one person born between Suri and Rahul which is same as number of person born between Faizal and Vineet and Hema and Faizal.

Hence, option d.

81-83

**Common solution:**

T is the brother-in-law of U, who has no siblings which means U is married to R, who is mother of V as T is the only son of P. Now, S is the aunt of T and P has no siblings which means S is the sister of Q.



81)

So, if Q is the female member than P must be male which means P is father-in-law of U.

Hence, option c.

82)

So, if P is the father of R which means Q is the mother of R and grandmother of W, who is the sister of V.

Hence, option e.

83)

T is the maternal uncle of V.

Hence, option d.

84 – 88

**Starting point:** Start placing Box K4 and B3. Box K4 is placed in odd numbered shelf but below the shelf 7. So, K4 is placed either on 5th or 3rd shelf.

**Clues:** Only two boxes are there in between K4 and B4. Box B5 is placed either top or at the bottom but box K3 is placed immediately below the box B5 which means box B5 is placed at the top, only three boxes are there in between box K3 and B2.

**Inference:** B5 is the topmost box. K3 is placed on 8th shelf. B2 is placed on the 4th shelf. There are two possible cases.

Case I. When Box K4 is placed on shelf 5.

Shelf	Box
9	B5
8	K3
7	
6	
5	K4
4	B2
3	
2	B4
1	

Case II. When box K4 is placed on shelf number 3.

Shelf	Box
9	B5
8	K3
7	
6	
5	
4	B2
3	K4
2	
1	

**Clues:** Box B1 is placed just above the box K1 and also equal number of shelves are there in between the box K4 and K2 and K2 and B3.

**Inference:** So this will eliminate case II. The final arrangement is as follows.

Shelf	Box
9	B5
8	K3
7	B1
6	K1
5	K4
4	B2
3	K2
2	B4
1	B3

84)

Box B2 is placed on the shelf 4.

Hence, option a

85)

Box B1 is placed just above the box K1.

Hence, option b.

86)

Three boxes are placed between the box K2 and B1.  
Hence, option a.

87)

Box B4 is placed in the shelf 2.  
Hence, option d.

88)

There are two boxes placed above the box B1.  
Hence option a.

89 - 93

**Common solution:**

**Starting Point:** Start with placing Mic, Raj and Que as we can fix their places.

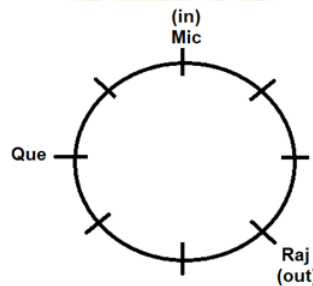
**Clues:**

1) Mic sits third to the left of Raj, who faces away from the centre.

2) Que sits second to the right of Mic.

**Inference:**

From clue 1 and 2, we get Mic faces towards the centre as Que and Raj cannot sit adjacent to one another as no two persons with names starts with consecutive alphabet sit adjacent to each other.



**Clues:**

1) Nac and Shi sit immediate right to each other.

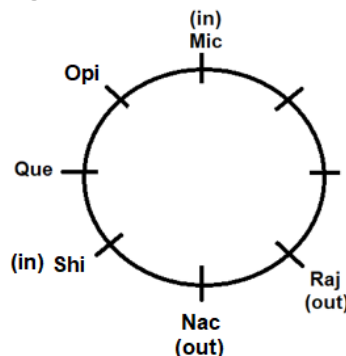
2) Only one person sits between Shi and Opi (either from left or right).

**Inference:**

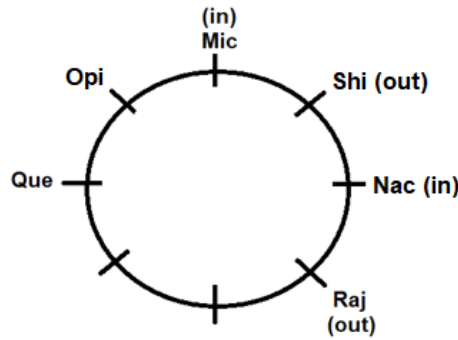
From clue 1, we get Nac sits either immediate right of Raj and faces away from the centre or immediate left of Raj and faces towards the centre.

From clue 2, we get Opi sits immediate right of Mic.

**Case I:** When Nac sits immediate right of Raj



**Case II:** When Nac sits immediate left of Raj.



**Clues:**

- 1) Piu sits third to the right of Opi.
- 2) Piu sits immediate right of Tim.
- 3) Que sits neither third to the left of Tim nor second to the right of Piu.
- 4) Que and Piu face opposite direction to each other.

**Inference:**

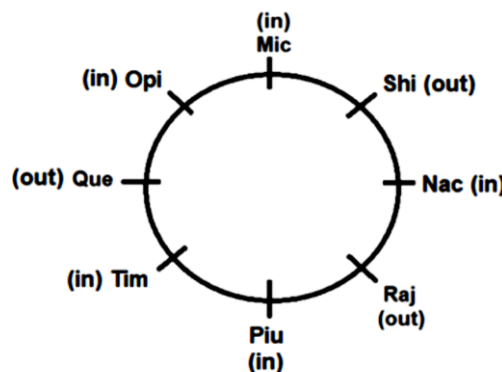
From clue 1, we get Piu sits immediate left or immediate right of Raj. Tim sits 2nd to the left or 2nd to the right of Raj

From clue 2, we get Tim faces either away from the centre or towards the centre.

From clue 3, we eliminate Case I as Que doesn't sit 3rd to the left of Tim. Piu faces towards the centre.

From clue 4, we get Que faces away from the centre.

Therefore, the final arrangement is given below:



**89)**

Only statements II and III are definitely true.

Hence, option d.

**90)**

Hence, option c.

**91)**

Two persons sit between Que and Raj, when counted from the left of Que.

Hence, option e.

**92)**

Opi sits third to the left of Piu.

Hence, option c.

93)

Shi and Raj face same direction. Mic and Piu face same direction.

Hence, option e.

94)

Given: KNOWLEDGE

The 2nd, 3rd, 7th, 8th and 9th letters are 'N, O, D, G, and E'.

Using the letters, no meaningful words can be formed

Hence, option d.

95)

Given word

'EXPLANATION' so, there are three such pairs i.e. AE, NL and NO

Hence, option a.

96 – 100

**Common solution:**

Starting Point: First, try to fix the direct hints i.e.,

1. C likes Sonata and works in Marketing department.
2. Q likes Fastrack.

Persons	Brands	Departments
C	Sonata	Marketing
Q	Fastrack	

**Clues:**

1. B works in same department with only one, who likes MI.
2. Both A and S work in the same department. Neither A nor D works in Marketing department.
3. Neither D nor P works in the same department as B.
4. One of the persons from Marketing department, likes Rado.

**Inference:** So, from clue 1, B either works in Finance or HR which means A and S either works in HR or Finance. Also, from clue 3, P must be working in Marketing and likes Rado.

So, we have 2 cases:

**Case I:** When B works in Finance:

Persons	Brands	Departments
A		HR
B		Finance
C	Sonata	Marketing
D		HR
P	Rado	Marketing
Q	Fastrack	Marketing
R	MI	Finance
S		HR

**Case II:** When B works in HR:

Persons	Brands	Departments
---------	--------	-------------

A		Finance
B		HR
C	Sonata	Marketing
D		
P	Rado	Marketing
Q	Fastrack	
R	MI	HR
S		Finance

**Clues:**

1. One of the persons, who works in Finance department, likes Samsung.
2. The one, who works in the same department as R, does not like Samsung.
3. S does not like Samsung brand.
4. B neither likes Titan nor Maxima. S does not like Titan. D does not like Samsung.

**Inference:** Regarding clues 1 and 2, case I is rejected as the one, who works in Finance likes Samsung. Also, neither D nor S likes Samsung which means A likes Samsung. D likes Titan. The final arrangement is as follows:

Persons	Brands	Departments
A	Samsung	Finance
B	Apple	HR
C	Sonata	Marketing
D	Titan	Finance
P	Rado	Marketing
Q	Fastrack	Marketing
R	MI	HR
S	Maxima	Finance

**96)**

B works in HR Department.  
Hence, option c.

**97)**

C and Q work in the same department as P.  
Hence, option e.

**98)**

R likes MI brand.  
Hence, option b.

**99)**

The one, who works in Finance, likes Titan brand.  
Hence, option a.

**100)**

All C, P and Q works in Finance.

Hence, option d.

